



Sleppstein

LK 6933



Sleppstein

LK 6933

General information

Name	Sleppstein
Builder	Jinling Shipyard, China
Flag	Norway
Port of Registry	Trondheim
Call sign	LK 6933
Class society	Skipskontrollen
Year build	1999/2000
Owner	Johs. J. Syltern AS
Manager	Johs. J. Syltern AS

Equipment

Aux equipment	One Hatz 2M41 Diesel Engine
Anchor	No
Deck winches	No
Mooring lines	4 pcs 48 mm mooring line
Navigation lights	Supplied by tug
Power supply	No
RoRo ramps	No

Additional information

The barges are designed for bulk transport with a split hull along the centerline operated by two powerful cylinders. A cargo hold of approximately 300m³ is located in the center of the barge, surrounded by watertight tanks for the necessary buoyancy. The two cylinder compartments are located in front and behind the cargo compartment. The two hinges are located on the deck above the cylinder compartments.

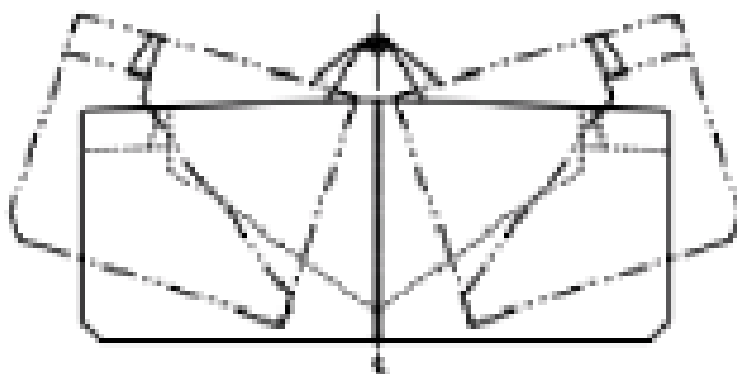
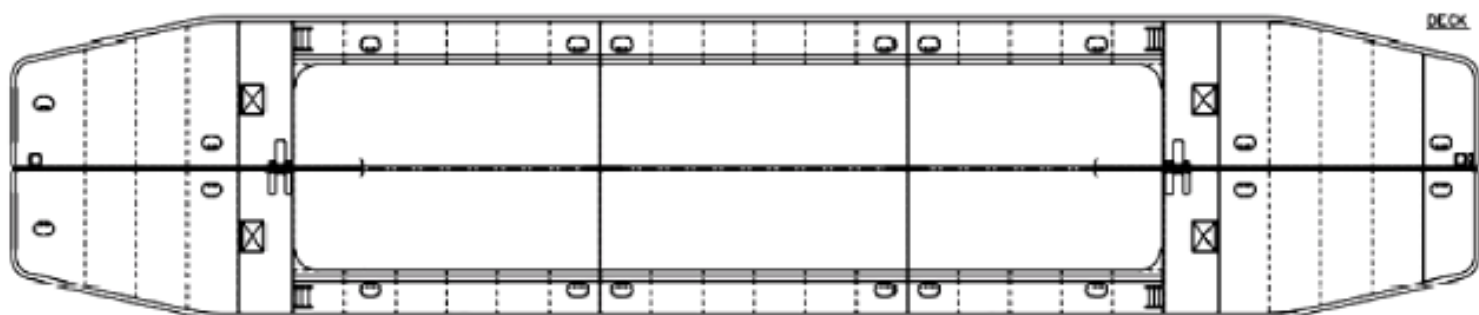
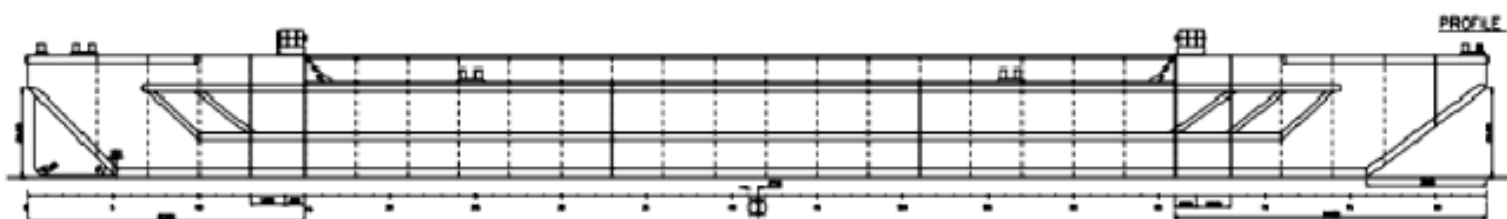
The diesel-hydraulic powerpack for operating the cylinders is located aft, with an associated remote control for safe opening from a tugboat. Both sides of the barges have steel fenders mounted.

Dimensions/Capacities

Length overall	42,7 meter
Breadth, moulded	8,5 meter
Depth, moulded	3,4 meter
Draught, fully loaded	2,29 meter
Gross tonnage	343
Net tonnage	102
Type of barge	Splittbarge
Cargo capacity	About 300 m ³
Flooring	Hardox steel inside cargo hull

Ballast system

Tanks	10 void space tanks
Smithbrakes	No
Towing bridle	Supplied from tug
Emergency towing	Supplied from tug
Bollards	3 on each side





Johs J. Syltern AS

Vassneset 10 • 7170 Åfjord

Tlf: 99 28 78 06

lekter@syltern.no

www.syltern.no