



# Polar Stein

LH 4913





# Polar Stein

LH 4913

## General information

Name	Polar Stein
Builder	Kockums AB, Malmø, Sverige
Flag	Norway
Port of Registry	Trondheim
Call sign	LH 4913
Class society	Det Norske Veritas
Year build	1984
Manager	Johs. J. Syltern AS

## Equipment

Aux equipment	One Volvo Penta Type D70 CRC. 69 kw at 1800 r/min Hydraulic tank/pump, Volvo flygmotor Type v30B-128-RK - N400 capacity 152 ltr/min
Anchor	2 anchor
Deck winches	4 pcs. Hydraulic winches a 8 tonn
Mooring lines	2 pcs 48 mm x 50 meter megasteel 2 pcs 48 mm x 110 meter megasteel 2 pcs 64 mm x 110 meter megasteel
Navigation lights	Fixed onboard
Power supply	Generator
RoRo ramps	1 RoRo ramp of 10 x 5,0 meter

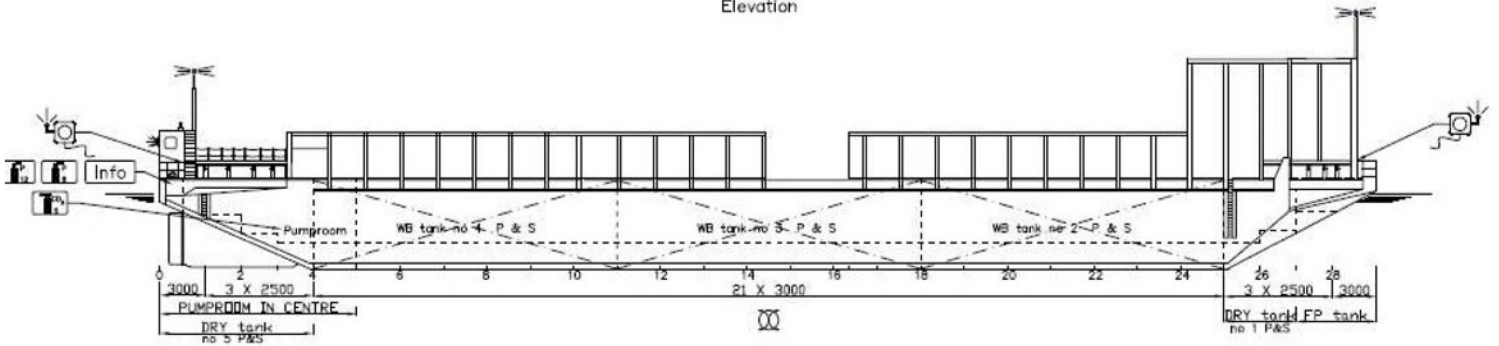
## Dimensions

Length overall	84,0 meter
Breadth, moulded	22,0 meter
Depth, moulded	6,0 meter
Draught, fully loaded	4,845 meter
Gross tonnage	BT 2770
Net tonnage	831
Deck area	70 x 20 meter
Cargo capacity	6000 tonn
Deck strenght	10 t/m <sup>2</sup>
Flooring	Steel, on top it is reinforced

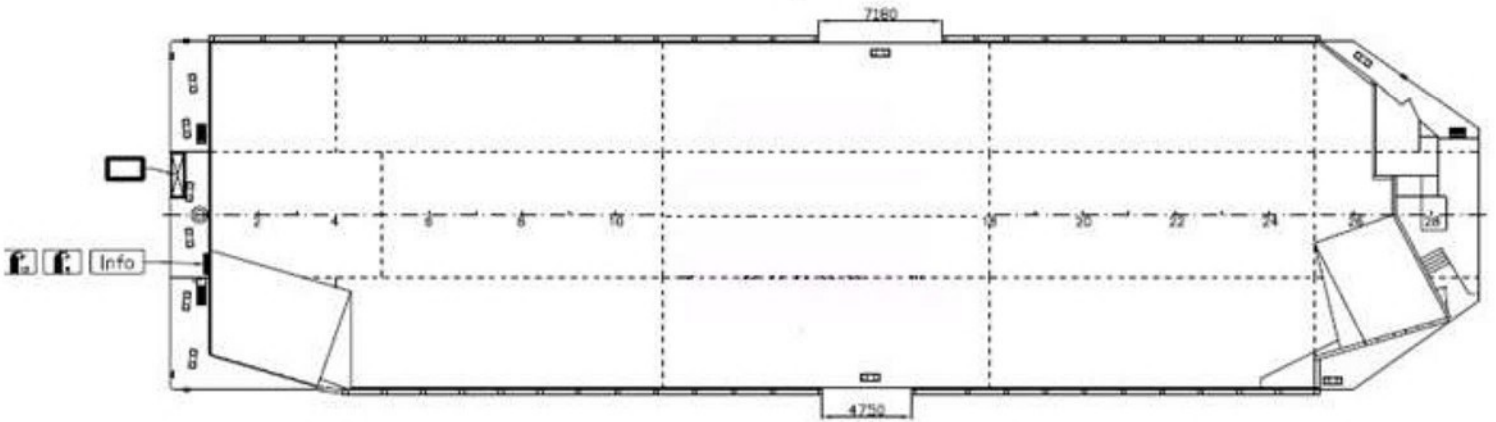
## Ballast system

Tanks	Totally 15 dry tanks, without ballast systems
Towing & Mooring Equipment	Supplied from tug
Smithbrakes	Welded eye for chain bridle
Towing bridle	2 x type 36 mm chainlegs of approx. 15 m length each. Complete with shackles and endlinks
Emergency towing	Emergency towing wire to welded eye forward. Wire of length approx. 100 m. Ø 64 mm, secured to port side of the barge, with a 72 mm rope connected in end.
Bollards	4 on each side of barge

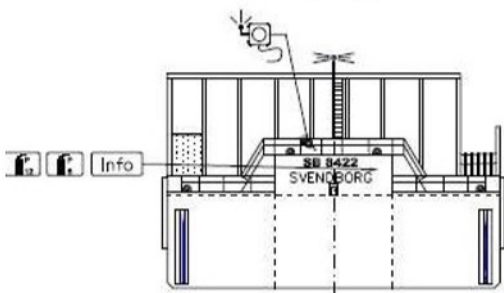
Elevation



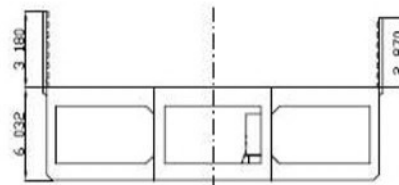
Upper deck



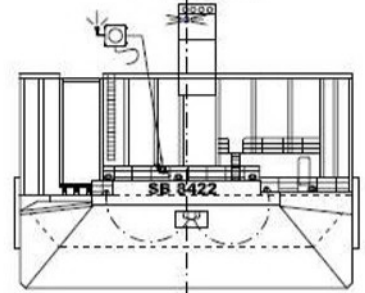
View AFT



Midship section



View Forward







## Johs J. Syltern AS

Vassneset 10 • 7170 Åfjord

Tlf: 99 28 78 06

lekter@syltern.no

[www.syltern.no](http://www.syltern.no)