



# Norstein

LK 9426



# Norstein

LK 9426

## General information

Name	Norstein
Builder	OY Navire AB
Flag	Norway
Port of Registry	Trondheim
Call sign	LK 9426
Class society	Det Norske Veritas
Year build	1980
Manager	Johs. J. Syltern AS

## Equipment

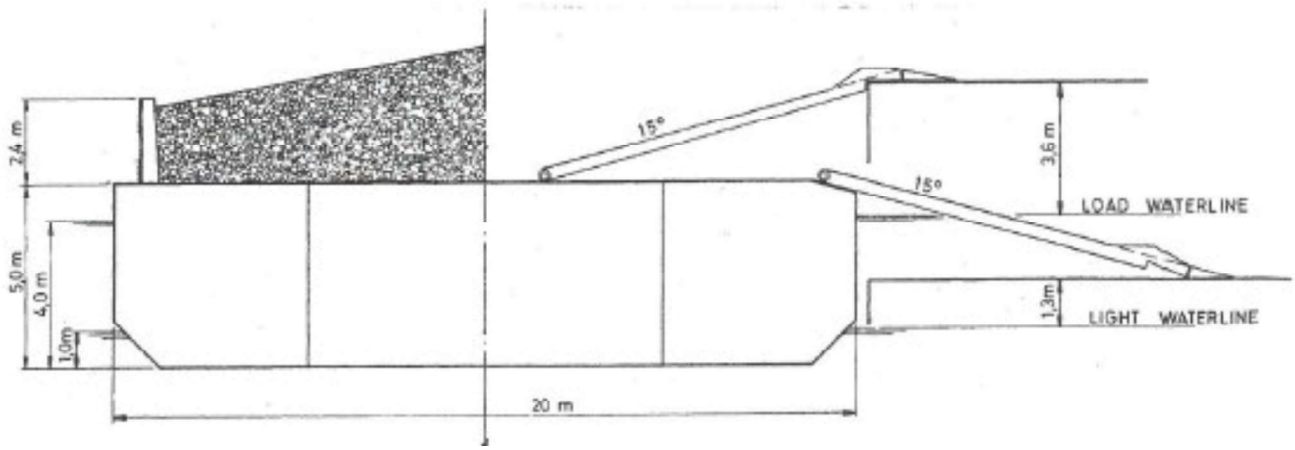
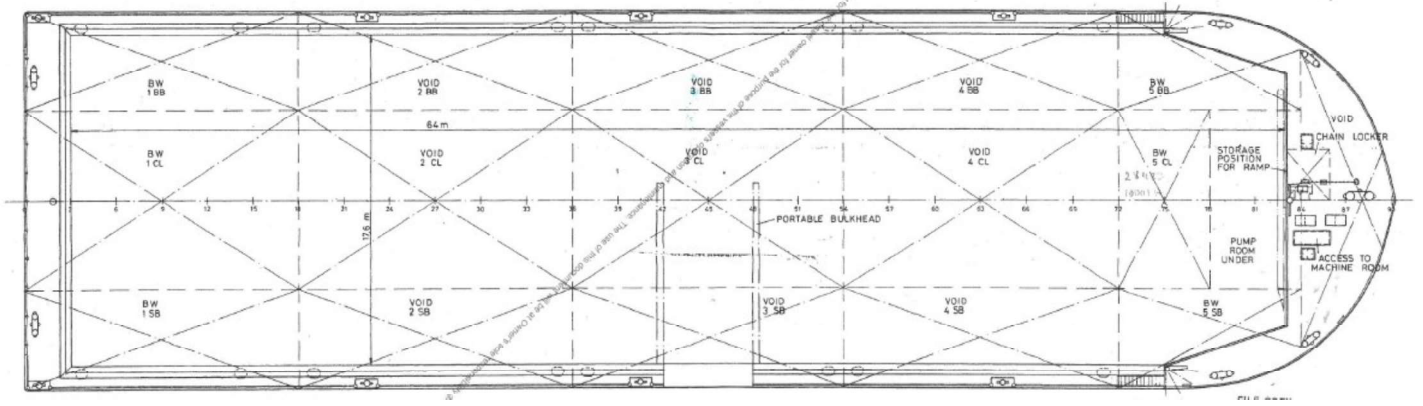
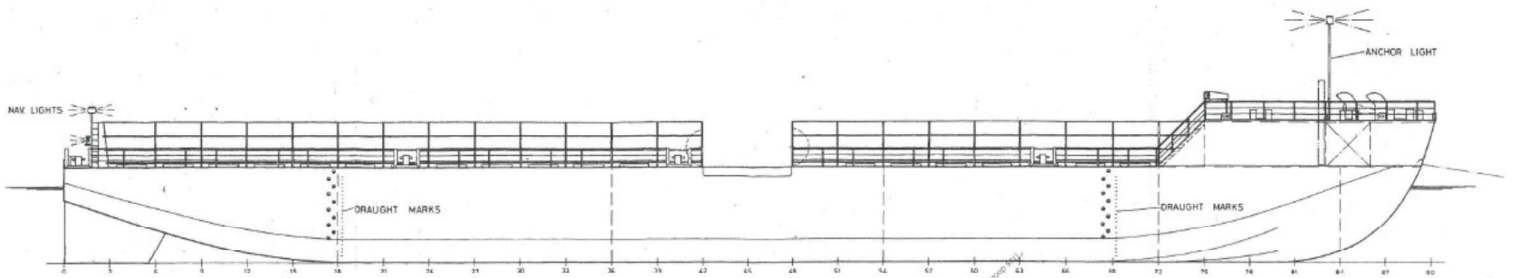
Aux equipment	Hydraulic tank Pump Rexroth
Anchor	4 anchor
Deck winches	4 pcs. Hydraulic winches with 110 meter x 22 mm wire
Mooring lines	4 pcs 48 mm x 55 meter
Navigation lights	Supplied by tug
Power supply	Generator
RoRo ramps	1 RoRo-ramp of 12 x 5,0 meter

## Dimensions

Length overall	72,3 meter
Breadth, moulded	20,0 meter
Depth, moulded	5,0 meter
Draught, fully loaded	4,1 meter
Gross tonnage	1705
Net tonnage	511
Deck area	64 x 17,6 meter
Cargo capacity	3000 tonn
Deck strength	10 t/m <sup>2</sup>
Flooring	Steel, on top it is reinforced by a layer of fiber concrete

## Ballast system

Tanks	Totally 15 dry tanks, without ballast systems
Towing & Mooring Equipment	Supplied from tug
Smithbrakes	No
Towing bridle	Supplied from tug
Emergency towing	Supplied from tug
Bollards	6 on each side of barge







## **Johs J. Syltern AS**

Vassneset 10 • 7170 Åfjord

Tlf: 99 28 78 06

lekter@syltern.no

[www.syltern.no](http://www.syltern.no)