



# Grunnstein

LK 6937



# Grunnstein

LK 6937

## General information

Name	Grunnstein
Builder	Jingling Shipyard, China
Flag	Norway
Port of Registry	Trondheim
Call sign	LK 6937
Class society	Skipskontrollen, NMD
Year build	2000
Manager	Johs. J. Syltern AS

## Equipment

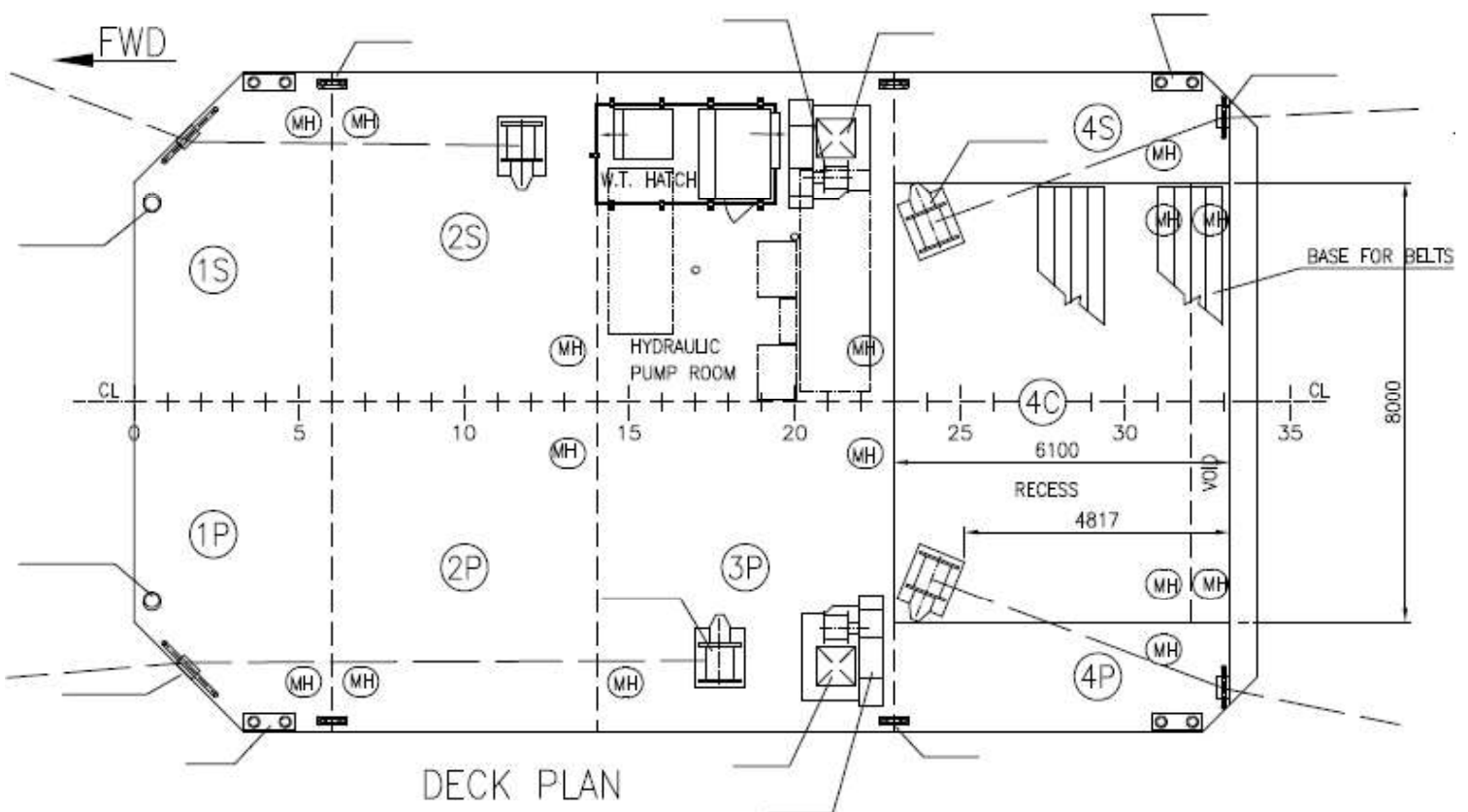
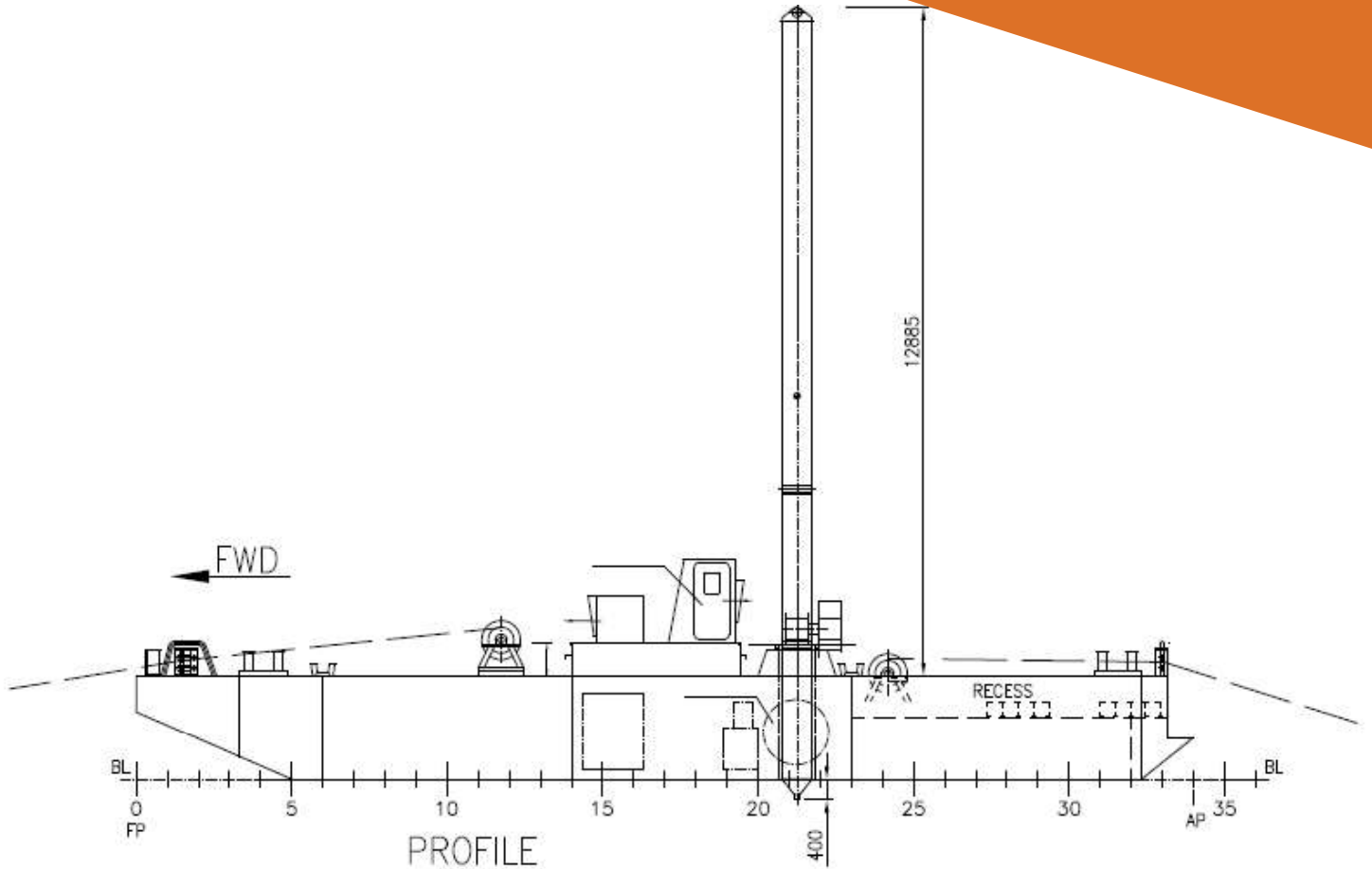
Aux equipment	Iveco 8060 100 kva
Anchor	2 anchor a 750 kg
Deck winches	4 pcs. Mooring winches
Mooring lines	Normally equipped with 4 mooring lines + wire on each winch
Navigation lights	Supplied by tugs
Power supply	100 kva/220 volt
RoRo ramps	No

## Dimensions/Capacities

Length overall	20,4 meter
Breadth, moulded	12,0 meter
Depth, moulded	2,0 meter
Draught, fully loaded	1,0 meter
Deck area	240,8 m <sup>2</sup>
Gross tonnage	93
Net tonnage	37
Cargo capacity	110 tonn
Deck strength	10 t/m <sup>2</sup>
Flooring	Steel

## Ballast system

Tanks	6 void space tanks + one engine room
Towing & Mooring Equipment	Supplied from tug
Smithbrakes	No
Towing bridle	Supplied from tug
Emergency towing	Supplied from tug
Bollards	3 on each side





## **Johs J. Syltern AS**

Vassneset 10 • 7170 Åfjord

Tlf: 99 28 78 06

lekter@syltern.no

[www.syltern.no](http://www.syltern.no)